



g2stobeq.ca

Q2
2025

ELECTRIC & HYBRID VEHICLE SAFETY SOLUTIONS



Brands Featured:





ELECTRIC & HYBRID VEHICLE SAFETY SOLUTIONS

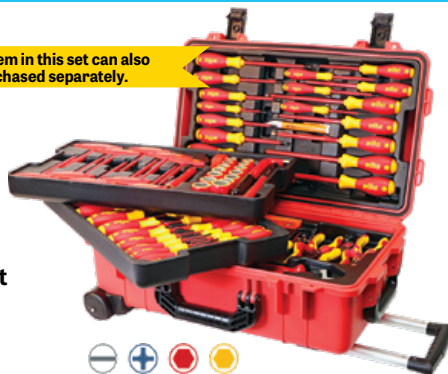


EV & HEV Service Tools & Equipment

wiha



Each item in this set can also be purchased separately.



WIH-32800

80-Pc Insulated Tool Set in Rolling Tool Case

- Screwdrivers:
 - Slotted: 2.5mm - 10mm
 - Phillips: #0, #1, #2, #3
 - Torx®: T6-T30
 - Square: #1, #2
 - Terminal block: #1, #2
- Nut drivers: 7/32" - 7/16", 5mm - 13mm
- Sockets: 1/2" - 7/8", 13mm - 22mm
- T-Handles: 5/32" - 3/8", 4mm - 8mm • L-keys: 1/2" & 10mm • Pliers • Cutters
- Ratchet: 3/8" drive • Extension: 3/8" x 5" • Cable knife: 2" (50mm)
- 2 Meter ruler: inch/metric • Category IV voltage detector: 110V to 250V
- Rolling water tight tool case: 22" L x 13-3/4" W x 9" H • Certified to 1000 Volt AC



Each item in this set can also be purchased separately.



WIH-32876

66-Pc Insulated Tool Set

- Screwdrivers:
 - Slotted: 2mm-10mm
 - Phillips: #0, #1, #2, #3
 - Torx®: T8-T30
 - Square: #1, #2
 - Terminal block: #1, #2
- Nut drivers: 1/4" - 7/16"
- Sockets: 1/2" - 7/8", 8 - 22mm
- Hex T-Handles: 5/32" - 3/8", 4 - 8mm
- Hex L-keys: 1/2" & 10mm
- Pliers
- Cutters
- Adjustable wrench
- Ratchet: 3/8" drive
- Extension: 3/8" x 5"
- Cable knife: 2" (50mm)
- Certified to 1000 Volt AC



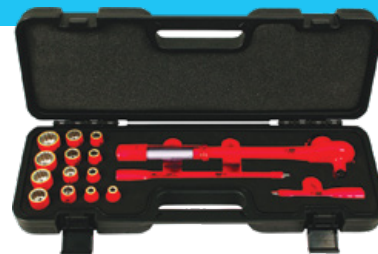
WIH-91890

26-Piece Insulated Essentials Tool Kit

- Screwdrivers:
 - Slotted: 3.5mm, 4.5mm, 6.5mm
 - Phillips: #1, #2
 - Torx®: T20, T25, T30
- 1/4" drive, 6 pt. sockets: 5-13mm
- 1/4" drive ratchet
- 2" & 4" extension bars
- Open end wrenches: 8mm-13mm
- 8" Tweezers • 3-Pc pliers/cutters
- 8.5" Cable stripping knife

Each item in this set can also be purchased separately.

wiha



16-Pc 3/8" Drive Insulated Ratcheting Torque Wrench and Socket Sets

- Sets include:
- Ratcheting torque wrench: 4-37 ft-lb (5-50 Nm)
 - Metric or SAE sockets
 - Extension bars: 5" & 10"
 - Certified to 1000 Volt AC

Each item in this set can also be purchased separately.

| | | |
|-----------|--------|-------------|
| WIH-30190 | SAE | 1/4" - 7/8" |
| WIH-30192 | Metric | 8mm - 20mm |

WIH-31391

13-Pc 1/4" Drive Insulated Metric Socket Set

- Sockets: 5mm - 14mm
- Extensions: 2", 4"
- 1/4" Drive reversible ratchet
- Certified to 1000 Volt AC or 1500 Volt DC

Each item in this set can also be purchased separately.



WIH-31590

10-Pc 3/8" Drive Insulated Metric Socket Set

- Sockets: 8mm - 19mm
- Extension: 5"
- 3/8" Drive reversible ratchet
- Certified to 1000 Volt AC or 1500 Volt DC

Each item in this set can also be purchased separately.



TITAN

TIT-66100

18-Pc 1/4" Drive Metric Socket Set, 1000V Insulated

- (13) Sockets: 4-14 mm
- Extensions: 2", 3", 4", 6"
- 1/4" drive reversible ratchet with quick release



wiha



Each item in this set can also be purchased separately.

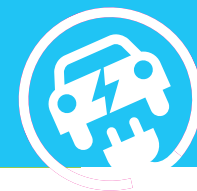
WIH-31491

16-Pc 3/8" Drive Insulated Inch/Metric Socket Set

- Inch sockets: 5/16" - 3/4"
- Metric sockets: 8mm - 19mm
- Certified to 1000 Volt AC or 1500 Volt DC



ELECTRIC & HYBRID VEHICLE SAFETY SOLUTIONS



EV & HEV Service Tools & Equipment



Made in Germany

Insulated Extensions

- Certified to 1000 Volt AC or 1500 Volt DC

| | |
|-----------|-----------|
| WIH-12854 | 1/4" x 2" |
| WIH-12855 | 1/4" x 4" |



TITAN



TIT-17237

7-Pc Insulated Screwdriver Set with Magnetic Tips

- Slotted: 1/8" x 3", 5/32" x 4", 7/32" x 5", 1/4" x 6"
- Phillips: #0 x 3", #1 x 4", #2 x 4"



TITAN



TIT-73277

7-Pc Insulated Precision Screwdriver Set

- Slotted: 1.5mm x 1.5", 1.8mm x 2-15/16", 2.0mm x 2-15/16", 2.5mm x 3", 3.0mm x 3"
- Phillips: #00 x 3", #0 x 3"



Made in Germany



Each item in this set can also be purchased separately.



WIH-28789

11-Pc Insulated TorqueVario-S Driver and SlimLine Blade Set

- TorqueVario-S driver: 10-50 in-lb
- SlimLine insulated blades: Slotted: 4mm, 6.5mm; Phillips: #1, #2; Square: #1, #2; Xeno: Terminal #1, #2
- Certified to 1000 Volt AC



CRE-CTVDESDS

7-Pc VDE 1000V Insulated Screwdriver Set

- Slotted: 1/8" x 3", 5/32" x 4", 7/32" x 5", 1/4" x 6"
- Phillips: #0 x 3", #1 x 3", #2 x 4"



Milwaukee® 1000V Insulated Tools

- Tested and certified to UL®, OSHA, VDE & GS standards
- Dual layer insulation offers visual wear indication for tool replacement
- Flame retardant & impact resistant handle and shank
- Visible ID markings



MLW-48-22-2202

3-Pc 1000V Insulated Screwdriver Set

- ECX™: #1 x 4"
- Phillips: #2 x 4"
- Slotted: 1/4" x 6"



MLW-48-22-2204

4-Pc 1000V Insulated Screwdriver Set

- Slotted: 1/4" and 3/8" – 6" and 8" long
- Phillips: #1 and #2 – 3" and 4" long



MLW-48-22-2205

4-Pc 1000V Insulated Screwdriver Set

- Slotted: 1/4" and 3/8" – 6" and 8" long
- Square: #1 and #2 – 3" and 4" long



MLW-48-22-2210

10-Pc 1000V Insulated Screwdriver Set

- ECX™: #1 x 4"
- Phillips: #1 x 3", #2 x 4", #3 x 6"
- Slotted: 1/4" x 6", 5/16" x 7", 3/8" x 8"
- Square: #1 x 3", #2 x 4", #3 x 6"



1000V Insulated Slim Tip Multi-Bit Screwdrivers with Storage Pouch

| | MLW-48-22-2216 | MLW-48-22-2217 | MLW-48-22-2218 |
|----------------|----------------|----------------------|----------------|
| | 4-in-1 | 8-in-1 | 8-in-1 |
| Phillips | + | #2 | #1, #2 |
| Slotted | — | 1/4", 3/16" | 3/32", 1/8" |
| Security Torx® | ⚙️ | TP7, TP8, TP10, TP15 | |
| Square | ■ | #2 | #1, #2 |
| ECX™ | ◆ | | #1, #2 |



ELECTRIC & HYBRID VEHICLE SAFETY SOLUTIONS



EV & HEV Service Tools & Equipment

wiha



Each item in this set can also be purchased separately.



33478



33490

Insulated T-Handle Hex Screwdriver Sets

- Certified to 1000 Volt AC

| | | |
|-----------|---------|--|
| WIH-33478 | 5-Piece | Metric: 4mm, 5mm, 6mm, 8mm, 10mm |
| WIH-33490 | 6-Piece | Inch: 5/32", 3/16", 7/32", 1/4", 5/16", 3/8" |

KNIPEX



KNI-98 33 50

3/8" Drive 15" Long Reversible Torque Wrench, 1000V Insulated

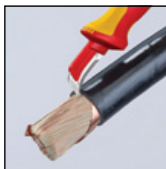
- Transparent scale range: 5-50 Nm
- Lockable torque adjustment



KNI-98 55

1000-Volt Insulated Electrician's Dismantling Knife, 7" Long

- 1.5" fixed hook blade with guide shoe at the blade point: no damage of the conductor insulation



Insulated Cable Cutters

- Operating voltage: 1000V AC - 1500V DC

CATU



| Item # | Length | Capacity |
|--------------|--------|----------|
| CTU-MO-67501 | 7" | 15mm |
| CTU-MO-67502 | 9" | 18mm |



wiha



75220



75302



75304

Insulated Tweezers

- Certified to 1000 Volt AC

| Item # | Description |
|-----------|---|
| WIH-75220 | 8" Insulated Tweezers, Serrated, Straight Blunt Tip |
| WIH-75302 | 6" Insulated Tweezers, Serrated, Angled Fine Tip |
| WIH-75304 | 8" Insulated Tweezers, Serrated, Angled Blunt Tip |

KNIPEX



KNI-98 99 11

17-Pc Compact Tool Set, 1000V Insulated

- 8" Combination pliers
- 6-1/4" Diagonal cutters
- 7-1/4" Cable knife
- Slotted screwdrivers: 1/8", 5/32", 7/32"
- Phillips® screwdriver: #0
- 1/2" Drive reversible ratchet
- 1/2" Drive Hex socket set: 10mm-19mm
- Extensions: 5", 10"



wiha



WIH-20196

13-Pc Insulated Open End Wrench Tray Set

- 8mm, 10mm, 11mm, 12mm, 13mm, 14mm, 15mm, 16mm, 17mm, 18mm, 19mm, 22mm, 24mm
- Certified to 1000 Volt AC



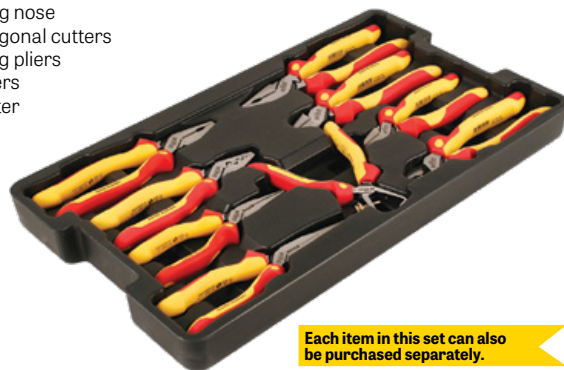
Each item in this set can also be purchased separately.

WIH-32999

9-Pc Insulated Pliers/Cutters Tray Set

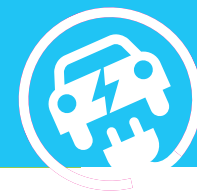
- 9" Lineman's with crimper
- 8" Lineman's
- 6.3" & 8" Long nose
- 6.3" & 8" Diagonal cutters
- 6.3" Stripping pliers
- 7" Crimp pliers
- 8" Cable cutter

wiha



Each item in this set can also be purchased separately.

ELECTRIC & HYBRID VEHICLE SAFETY SOLUTIONS

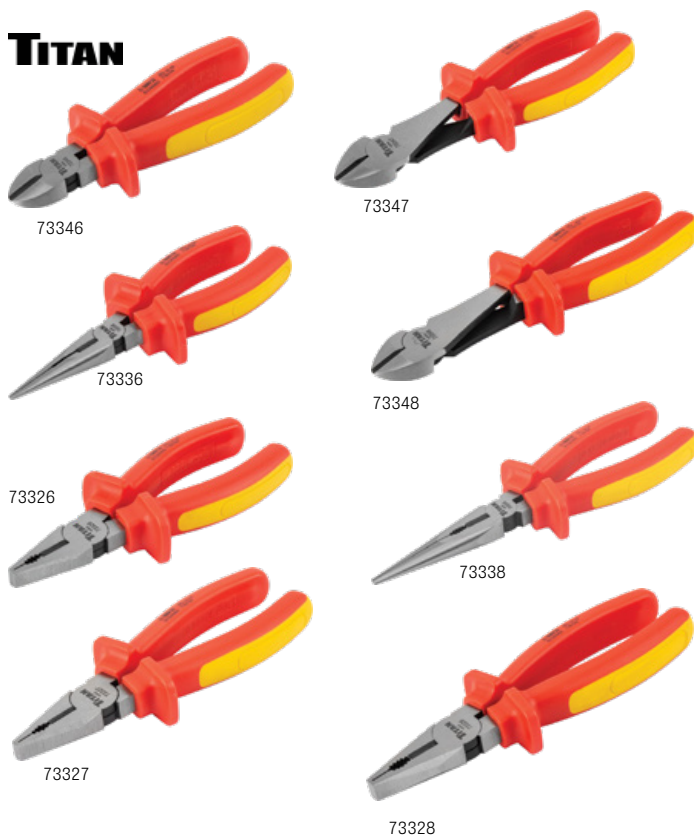


EV & HEV Service Tools & Equipment



1000V Insulated Pliers

| Item # | Description |
|--------------------------------|---|
| Diagonal Cutting Pliers | |
| CRE-6DIAGVDE | 6" 1000V Insulated Diagonal Pliers |
| CRE-7DIAGVDE | 7" 1000V Insulated Diagonal Pliers |
| Long Nose Pliers | |
| CRE-6LNVDE | 6" 1000V Insulated Long Nose Pliers |
| CRE-8LNVDE | 8" 1000V Insulated Long Nose Pliers |
| Linesman Pliers | |
| CRE-6LMVDE | 6" 1000V Insulated Linesman Pliers |
| CRE-7LMVDE | 7" 1000V Insulated Linesman Pliers |
| CRE-8LMVDE | 8" 1000V Insulated Linesman Pliers |
| Wire Stripper Pliers | |
| CRE-6WSVDE | 6" 1000V Insulated Wire Stripper Pliers |



1000V Insulated Pliers

| Item # | Description |
|--------------------------------|---|
| Diagonal Cutting Pliers | |
| TIT-73346 | 6" Diagonal Pliers, 1000V Insulated |
| TIT-73347 | 7" Extended Diagonal Pliers, 1000V Insulated |
| TIT-73348 | 8" Extended Diagonal Pliers, 1000V Insulated |
| Long Nose Pliers | |
| TIT-73336 | 6" Long Nose Pliers, 1000V Insulated |
| TIT-73338 | 8" Long Nose Pliers, 1000V Insulated |
| Linesman Pliers | |
| TIT-73326 | 6" Combination Linesman's Pliers, 1000V Insulated |
| TIT-73327 | 7" Combination Linesman's Pliers, 1000V Insulated |
| TIT-73328 | 8" Combination Linesman's Pliers, 1000V Insulated |



1000V Insulated Pliers

| Item # | Length |
|--------------------------------|--------|
| Diagonal Cutting Pliers | |
| MLW-48-22-2208 | 8" |
| Lineman's Pliers | |
| MLW-48-22-2209 | 9" |



MLW-48-22-2215 5-Pc 1000V Insulated Hand Tool Set

- (1) Slim tip 4" screwdriver: 1/4" Cabinet
- (1) Slim tip 4" screwdriver: #2 Phillips
- (1) 9" Lineman's pliers
- (1) 8" Diagonal cutting pliers
- (1) Wire stripper & cutter - 10-20 AWG





ELECTRIC & HYBRID VEHICLE SAFETY SOLUTIONS



EV & HEV Service Tools & Equipment



CTU-MO7582D

Entirely Insulated Magnet on Flexible Handle

- Magnet diameter: 0.24" (6mm)
- Maximum load to the magnet: 1.65 lbs (0.750 kg)
- Certified to 1000 Volt AC or 1500 Volt DC



TIT-71101

22" Long 1000V Insulated Flexible Inspection Mirror

- 2" mirror



TITAN

TIT-71100

22" Long 1000V Insulated Flexible Magnetic Pick-Up Tool

- 1.5 lbs magnetic capacity



TITAN

TIT-71103

9" Long 1000V Insulated Mirror with Pliable Handle

- 2" mirror



TITAN



CTU-ALPV-XL-D

Locking Cover for Steering Wheel

- Up to 24.4" (62 cm)
- Transparent pocket (A5 size) allows to display a personalized message during the lock-out procedure
- Strap closure at the back with 10mm metal eyelets for inserting a padlock and self-gripping part



CTU-MP-11/11

Insulating Mat – Class 0

- Insulating mat for live line work and dead work
- 3.3 ft. x 3.3 ft. (1m x 1m) • Thickness: 2.2mm
- Operating voltage: 1000V AC – 1500V DC
- Low temperature folding test at -40 °C
- Operating temp.: -40°C to +55°C



CTU-MP-220

Orange Insulating Blanket – Class 0

- Used as protection for workers operating on live lines, live parts or in the vicinity of live parts
- 3.3 ft. x 3.3 ft. (1m x 1m)
- Thickness: 1.2mm
- Operating voltage: 1000V AC – 1500V DC
- Resistance to bending at very low temperature (-40°C)
- Oil resistance and high puncture resistance
- Operating temp.: -40°C to +55°C



KNI-98 67 05

20" x 20" Rubber Mat, 1000V Insulated

- For added protection when working live or close to live parts
- Thickness: 1/16" (1.58mm)

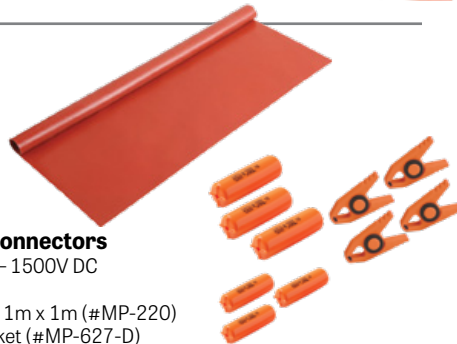


Each item in this set can also be purchased separately.

CTU-KIT-RC-TST1

Protective Equipment Kit for Live Conductors and Connectors

- Operating voltage: 1000V AC – 1500V DC
- Includes:
 - (1) Insulating blanket, Class 0, 1m x 1m (#MP-220)
 - (4) Insulating clamps for blanket (#MP-627-D)
 - (3) Insulating caps, Class 0, 30mm x 120mm (#MP-635/30-D)
 - (3) Insulating caps, Class 0, 60mm x 180mm (#MP-635/60-D)



Insulating Blanket – Class 0

- Used as protection for workers operating on live parts or in the vicinity of live parts
- Operating voltage: 1,000V AC - 1,500V DC
- Acid and oil resistance
- High puncture resistance
- Gripping tape ("Velcro" type) all around the blanket for fixation or fitting with another blanket
- Operating temp. range: -40°C to +55°C

| Item # | Description |
|--------------|-----------------------------|
| CTU-MP-123 | 14" x 26" (0.36m x 0.66m) |
| CTU-MP-123/1 | 19.5" x 35.5" (0.5m x 0.9m) |
| CTU-MP-123/2 | 31.5" x 47" (0.8m x 1.2m) |



MP-35
ML-35/12



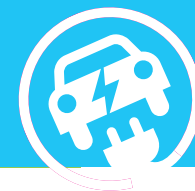
MP-37

Insulating Transparent & Flexible PVC Blanket – Class 0

- Insulating blanket for workers operating on live parts or in the vicinity of live parts
- Operating voltage: 1,000 V AC - 1,500 V DC
- Must be fixed with MP-41A70 insulating magnets or MP-41-..., or MP-62.D clamps
- Resistance to acid, oil and ozone
- Operating temp. range: -40°C to +55°C

| Item # | Description |
|--------------|----------------------------------|
| CTU-MP-35 | 4.25 ft. x 82 ft. (1.3m x 25m) |
| CTU-MP-35/12 | 4.25 ft. x 41 ft. (1.3m x 12.5m) |
| CTU-MP-37 | 3.5" x 82 ft. (90mm x 25m) |

ELECTRIC & HYBRID VEHICLE SAFETY SOLUTIONS



EV & HEV Service Tools & Equipment



Each item in this set can also be purchased separately.



CTU-KIT-VEH

Delineation Kit for Application in the Field of Electric & Hybrid Vehicles and Machines

- (6) Red and white ballasted boundary posts (#AL-323)
- (1) Plastic chain with red and white links, 25m (#AL-31/25)
- (2) Plastic signs, 450mm x 150mm (#AP-72)



Folding Modular Safety Barrier

- Lightweight and stable 3-panel intervention barrier (AL-325), used to temporarily fence off and delimit a work area
- Light and flexible structure made of PVC tubes and panels made of 100% polyester fabric in fluorescent yellow
- Modularity: possibility to add or remove panels
- AL-326: Additional element made up of a single panel, allowing to enlarge the barrier
- Fixing by 2 junction clips (supplied)
- For indoor use

| Item # | Description | Dimensions |
|------------|-------------------|---------------------------------|
| CTU-AL-325 | 3-Panel Barrier | 5.5 ft. x 3.25 ft. (1.71m x 1m) |
| CTU-AL-326 | 1 Panel Extension | 2 ft. x 3.25 ft. (0.57m x 1m) |



CTU-ACA-10

"Electric Hazard" Warning Pyramid with Magnetic Base

- Cardboard cone, 5.5" (140mm) side



CTU-AT-5005

Safety Adhesive Signaling/Delineation Tape

- Self-adhesive PVC
- 2" x 328 ft. (50mm x 100m)



KLE-58000

CAUTION Tape, Barricade

- 3" x 200 feet (76mm x 61m)
- Made of tough, durable (2.5 mil) polyethylene
- Highly resistant to acids, alkalis and other components



CTU-CS452

Rescue Stick with Insulated Permanent Hook

- 45 kV
- 1.65m long
- Includes wall brackets (#CI-06-D)



Each item in this set can also be purchased separately.

CTU-CZ-EV-RESC

Rescue Wall Kit for Automotive Maintenance and Body Repair Shops

- (1) Rescue stick with insulated hook (#CS-45/2)
- (1) Wall box for insulated gloves (#CG-35-2)
- (1) Pair of rubber insulating gloves, Class 0, 1000V AC / 1500V DC, size 10 (#CGM-0-10)
- (1) Fire extinguisher for Li-Ion battery (#CD-307)
- Wall mounting accessories





ELECTRIC & HYBRID VEHICLE SAFETY SOLUTIONS

EV & HEV Service Tools & Equipment



Each item in this set can also be purchased separately.



CTU-KIT-VEH-DEP

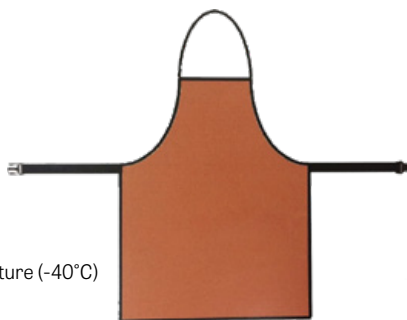
Head and Hand Protection Kit for Towing Services for Electric and Hybrid Vehicles and Machines

- (1) Arc-Flash protective faceshield with headband and a storage bag (#MO-286)
- (1) Pair of short insulating gloves (28cm), Class 0, 1000V AC / 1500V DC, size 10 (#CG-O-10-R-28)
- (1) Pair of cotton under-gloves (#CG-80-H)
- (1) Pair of short leather overgloves, size 10 (#CG-984-10)
- (1) Bag for protection and storage of gloves (#CG-36-1)
- (40) "DAMAGED VEHICLE" removable stickers (#AT-81)
- (1) Non-conducting safety padlock (#PP-6-38-R-Z)
- (10) Safety Tag-Out badges with warning sign (#AP-460)
- (1) Storage bag (#MO-42/2)

CTU-MV-99-INSD

Orange Elastomer Insulating Apron – Class 0

- Operating voltage: 1000V AC – 1500V DC
- Adjustable belt strap with plastic lock
- Acid and oil resistant
- High resistance to perforation
- Can be folded at very low temperature (-40°C)
- Insulator's H x W: 65 cm x 50 cm
- Thickness: 1.2mm



High-Visibility Multi-Risk Parka with Hood for Protection Against Electric Arc

- Protection against thermal hazards of an electric arc, heat and flames, rain protection, anti-static, small splash of liquid chemicals
- Central zip with flap, adjustable belt at the waist
- 2 Chest pockets and 2 hip pockets

| Item # | Size |
|--------------|------|
| CTU-M-883374 | S |
| CTU-M-883377 | M |
| CTU-M-883378 | L |
| CTU-M-883379 | XL |
| CTU-M-883380 | 2XL |
| CTU-M-883381 | 3XL |



CAT'ARC Multi-Risk Switching Jacket to Protect Against an Electric Arc

- Designed to be worn on top of the usual clothing
- Adjustable hood
- To be worn with a visor or a helmet
- Velcro® central fastening along the entire length
- Back length of 47" (121 cm)
- Visor, insulated gloves and shoes sold separately

| Item # | Size |
|------------------|------|
| CTU-AFG-2300-S | S |
| CTU-AFG-2300-L | L |
| CTU-AFG-2300-2XL | 2XL |
| CTU-AFG-2300-4XL | 4XL |



Safety Shoes with Insulating Sole – Class 0

- Operating voltage: 1000V AC – 1500V DC
- Low-cut and textile type shoe
- Slip resistant sole
- Leather reinforcements at the front and the back
- Extra perspiration-resistant, anti-bacterial lining

| Item # | Size |
|---------------|------|
| CTU-MV-226-40 | 40 |
| CTU-MV-226-41 | 41 |
| CTU-MV-226-42 | 42 |
| CTU-MV-226-43 | 43 |
| CTU-MV-226-44 | 44 |
| CTU-MV-226-45 | 45 |
| CTU-MV-226-46 | 46 |
| CTU-MV-226-47 | 47 |

Insulating Overboots – Class 1

- Operating voltage: 7,500V AC / 11,250V DC
- Meets the requirements of ASTM 1117 (20kV)
- Ideal for temporary and frequent use
- Fit perfectly over safety shoes
- 100% waterproof
- Fuel and oil resistant rubber sole promoting a superior slip resistance
- Sole pattern design avoids clogging and catching on rungs when climbing ladders
- Hot contact resistant sole to 300°C for 60 seconds
- Quick and easy to wear & remove; kick-off lug for hands free removal
- Comfortable, durable and lightweight



| Item # | Size |
|---------------|------------|
| CTU-MV-138-M | M (39-42) |
| CTU-MV-138-L | L (43-45) |
| CTU-MV-138-XL | XL (46-49) |

CTU-MO-286

Arc-Flash Protective Face Shield with Headband for Electrician

- Protective face shield against thermal effect of short-circuit electric arcs
- To wear without a helmet
- Ratchet head adjustment
- Anti-scratch and anti-fogging treatments
- Visor height: 8" (20.5 cm)



ELECTRIC & HYBRID VEHICLE SAFETY SOLUTIONS



EV & HEV Service Tools & Equipment



Electrical Insulating Gloves, Red – Class 0

- Includes the dielectric and conformity certificate
- Rolled edges for more comfort
- Material: Natural Latex
- Length: 14"



| Item # | Size |
|------------------|----------|
| CTU-GI-01408-RR1 | 8 (M) |
| CTU-GI-01409-RR1 | 9 (L) |
| CTU-GI-01410-RR1 | 10 (XL) |
| CTU-GI-01411-RR1 | 11 (2XL) |

Leather Overgloves for Low Voltage Insulating Gloves

- Ensure mechanical protection for insulating gloves (Class 00 & 0)
- Resistant to flame and contact heat of 100°C for 10 seconds according to EN 407
- Velcro® adjustable cuffs



| Item # | Size |
|---------------|------|
| CTU-CG-981-08 | 8 |
| CTU-CG-981-09 | 9 |
| CTU-CG-981-10 | 10 |
| CTU-CG-981-11 | 11 |

Undergloves for Insulating Gloves

- Comfortable fit, washable undergloves improve the comfort of use and hygiene of insulating gloves
- Helps protect from Latex allergies



| Item # | Fits Size |
|-------------|-----------|
| CTU-CG-80-F | 8 |
| CTU-CG-80-H | 9, 10, 11 |

CTU-CG-36-1

Storage Case for Insulating Gloves – Class 00, 0, 1

- Made of repellent reinforced fabric for the transportation of insulating gloves in vehicles and tool boxes
- Rear loop for belt carriage and transparent pocket for instructions or identification
- Velcro fastening
- 16.5" x 7" x 2"



CTU-CG-117

Pneumatic Tester for Insulating Gloves

- For compulsory control of insulating gloves from class 00 to 4 before use
- Checking is done by inflating the insulating gloves and immersing in water



ANSELL GLOVE SIZING CHART

Measure the width of your hand from the base of your index finger and across your knuckles.

Ansell

| | |
|----------|--------------|
| 7 / S | 75mm / 3" |
| 8 / M | 88mm / 3.5" |
| 9 / L | 101mm / 4" |
| 10 / XL | 113mm / 4.5" |
| 11 / 2XL | 126mm / 5" |
| 12 / 3XL | 140mm / 5.5" |

No Returns Accepted

100% Natural Rubber Electrical Insulating Gloves

- 11" long gloves
- Ergonomically-designed hand-at-rest shape for less hand fatigue
- Generous flared cuff allows room for clothing and improves ventilation
- Exceeds ASTM D120 standards for tensile strength, elongation, tear & puncture resistance
- Product meets all applicable ASTM, NFPA, OSHA, CSA and EN standards



Red Gloves, Class 0

- Max. use voltage AC/DC 1,000 / 1,500 Volt

| Item # | Size |
|----------------|------|
| ANS-RIG011R070 | 7 |
| ANS-RIG011R080 | 8 |
| ANS-RIG011R090 | 9 |
| ANS-RIG011R100 | 10 |
| ANS-RIG011R110 | 11 |
| ANS-RIG011R120 | 12 |

Yellow Gloves, Class 0

- Max. use voltage AC/DC 1,000 / 1,500 Volt

| Item # | Size |
|----------------|------|
| ANS-RIG011Y070 | 7 |
| ANS-RIG011Y080 | 8 |
| ANS-RIG011Y090 | 9 |
| ANS-RIG011Y100 | 10 |
| ANS-RIG011Y110 | 11 |
| ANS-RIG011Y120 | 12 |

10" Industrial Leather Protector Gloves – Class 00, 0

- Should always be worn over Rubber Insulating Gloves to meet OSHA and ASTM standards to provide mechanical protection against cuts, abrasions and punctures
- SIZING: These leather gloves should be ordered in the same size as the Rubber Electrical Insulating Gloves

Ansell

| Item # | Size |
|-----------------|------|
| ANS-RIGLVCVR070 | 7 |
| ANS-RIGLVCVR080 | 8 |
| ANS-RIGLVCVR090 | 9 |
| ANS-RIGLVCVR100 | 10 |
| ANS-RIGLVCVR110 | 11 |
| ANS-RIGLVCVR120 | 12 |



Protective Bag with Clip

- Canvas glove bag is designed for use with Electrical Insulating Gloves

| Item # | Size |
|-----------------|------|
| ANS-RIGCVSBAG14 | 14" |
| ANS-RIGCVSBAG16 | 16" |

Ansell





ELECTRIC & HYBRID VEHICLE SAFETY SOLUTIONS



EV & HEV Service Tools & Equipment



TBQ-4JPT

4-Pc Lifting Jack Pads for Tesla Models S, 3, X, Y

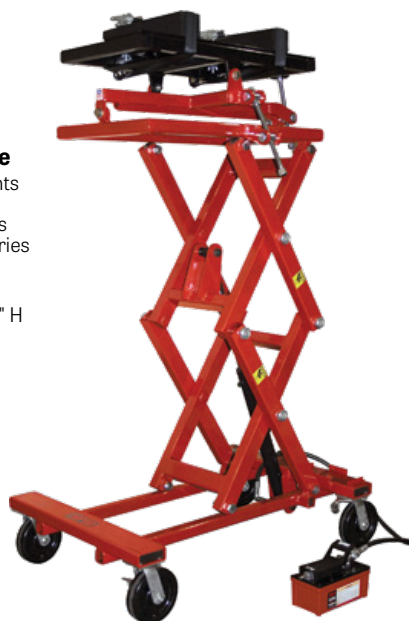
- These rubber pads are positioned under the designated Tesla lift points to prevent damage to the battery or the side rails of the vehicle when lifting
- Load capacity (4 pads): 5 ton



NRC-72850A

2,500 Lbs Capacity Powertrain Lift/Work Table

- Handles powertrain components like engines, transmissions, transaxle assemblies, rear ends and large electric vehicle batteries
- Air/hydraulic foot pump
- Lift height: 31" to 78"
- Overall dim.: 50" L x 33" W x 35" H
- Table size: 19" x 36"
- Saddle tilt: 15°
- Weight: 665 lbs



ATD-7478

2,500 Lbs Capacity Powertrain Lifting Table

- Designed to handle heavy engine, drive axle assemblies, transmissions, electric vehicle batteries and other vehicle components
- Air/hydraulic foot pump
- Capacity @ 100 psi: 2,500 lbs
- Lifting range: 33" - 77"
- Table size: 19.7" x 32"
- Table tilt: +/- 11°
- Overall dim.: 48" x 33" x 33"
- Weight: 586 lbs



Made in France

CTU-MO-810

Insulating Device To Lift Up Batteries

- To lift up batteries for live working at low voltage
- To lift forklift batteries for maintenance operations
- Operating voltage: 1,000 V AC - 1,500 V DC
- Adjustable fixing capacity from 81mm to 118 mm
- Max. load: 507 lbs (230 kg)



OTC-1585A

1,250 Lbs Capacity Power Train Lift with Tilting Plate

- Ideal for engine and transaxle service
- Height range: 29-1/2" to 68-1/2"
- Weight: 372 lbs



CTA-8854

3L Capacity ELECTRIC VEHICLE Brake Bleeding Kit

- Services various EV models, including Tesla Models X, S, 3, and Y
- Includes 36mm and 37mm brake bleeder all-metal adapters





AUTEL MAXIEV

AUL-CDT100

EV Battery Discharge/Charge Unit with Wide Voltage Tests and Maintenance Modes

- Wide voltage design, suitable for discharge, charge, and activation testing of modules with different voltage levels
- Set Constant Current and Power, Charge and Discharge modes for varied applications
- Improves charging efficiency by ensuring full charge
- Optimize battery pack capacity with constant current discharge, and charge modes
- Displays single-cell maximum/minimum voltage and other data on-screen in graphs, columns, and report forms
- Issues warnings for reverse connection, over temperature, overcurrent, fan failure and overcharge
- **Charge-discharge voltage range:** 2-285V DC
- **Discharge current range:** 150A/7.2kW max.
- **Charge current range:** 100A/4.4kW max.
- **Power supply:** 110/220V AC



EXTEQ

XTQ-E-MILLIOHM

E-MILLIOHM Bonding Tester

- Specialized electrical testing device used to measure very low electrical resistance, typically in the milliohm ($m\Omega$) range.
- It is commonly used in applications where ensuring a strong electrical bond or connection is critical, such as in grounding systems, electrical wiring, and bonding of metal components in various industrial, automotive, and aerospace environments.

Key Uses:

1. **Grounding and Bonding:** Ensures low-resistance connections between different components to avoid voltage differences that could lead to safety hazards, like electrical shock or fire.
2. **Quality Control:** Verifies that wiring, connectors, and metal joints meet required resistance standards, ensuring the electrical integrity of the system.
3. **Automotive and Aerospace:** Tests electrical bonding between metal surfaces, which is essential for maintaining the functionality of electrical systems and preventing electromagnetic interference.





ELECTRIC & HYBRID VEHICLE SAFETY SOLUTIONS



EV & HEV Service Tools & Equipment



CTU-MS-917-L

Detex™ Low Voltage Detector

- Operating voltage: 12-690V AC / 12-750V DC
- (7) Thresholds • Frequency: 50-60 Hz
- Continuity: 200 Ω • Polarity
- Unipolar phase identification
- Phase indication
- Completely modular and adjustable to eclipse sockets



PWP-VT750LCD

Two-Pole Voltage Tester for Electric and Hybrid Vehicles

- Safety rated at 1000V CAT III, 600V CAT IV
- Automatically selects the correct voltage range
- AC/DC Volts: 750V
- Resistance: 0-2,000Ω • Frequency: 30Hz-999Hz
- Continuity beeper: $\leq 600k\Omega$ • Diode test: 0.3V-0.9V
- Single phase test voltage: 100-750V



FLU-5066006

Fluke 1507 – Insulation Resistance Tester

- Rugged, compact advanced insulation resistance tester for electrical contractors and industrial and commercial electricians
- Automatically calculates Polarization Index and Dielectric Absorption Ratio
- Makes repetitive tests simple and easy with a Compare (Pass/Fail) function
- Voltage AC/DC: 0.1V to 600V
- Continuity: 200 mA
- Resistance: 0.01 Ω to 20.00 kΩ
- Insulation test range: 0.01 MΩ to 10 GΩ
- Insulation test voltages: 50V, 100V, 250V, 500V, 1000V



FLU-4691215

Fluke 1587 FC – Insulation Tester & True RMS Multimeter

- Fluke Connect®-enabled
- PI/DAR timed ratio tests
- Insulation test range: 0.01 MΩ to 2 GΩ
- Insulation test voltages: 50V, 100V, 250V, 500V, 1000V
- Voltage AC/DC: 1000V
- Capacitance, diode test, temperature, Min/Max, and frequency
- Continuity: 200 mA
- Resistance: 50 MΩ



KLE-ET600

Insulation Resistance Tester with Multimeter Test Functions

- Test voltages: 125V, 250V, 500V, 1000V
- Insulation resistance: 4000MΩ
- Test lock
- Live circuit detection
- AC/DC voltage: 1000V
- Resistance: 4kΩ
- True RMS • Audible continuity
- Auto-ranging, Auto-Zero
- Data hold • Min/Max value
- Bar graph
- CAT IV 600V and CAT III 1000V



PWP-PPDMM

Automotive Digital Multimeter



- Hybrid safe CAT-IV 600V
- Digital Volt and Ohmmeter for circuit testing
- Measures:
 - AC/DC Voltage to 600V
 - Current to 10 Amps
 - Resistance/Diode/Continuity to 60M Ohms
 - Capacitance: 0.0001μF to 60,000μF
 - Frequency, duty cycle
 - Temperature from -4°F to 1,832°F (-20°C to 1,000°C)
- Data hold, Min/Max capture, relative measurement



BSD-F00E9001013CM

MMD 540H Hybrid Digital Multimeter

- CAT III (1,000V) safety rating for hybrid vehicle circuits
- Peak, Min/Max readings as fast as 1 millisecond
- Higher amperage test ranges, up to 20 Amps
- Inductive RPM clamp for conventional and DIS ignition systems
- Fused diagnostic test leads for safe trouble shooting (up to 20 amps)
- K-Type thermocouple for quick temperature measurement
- Trilingual users manual on CD



ESI-550

EV & Hybrid Vehicle Insulation Tester

- Test voltages: 250V-200MΩ, 500V-200MΩ, 1000V-2000MΩ
- AC voltage: 0-750V, 1V resolution
- DC voltage: 0-1000V, 1V resolution
- Resistance: 0-200Ω, 2000Ω, 0.1 Ohm resolution
- Insulation resistance: 200MΩ, 2000MΩ, 200k resolution
- Continuity test: Audible beep $\leq 40\Omega$, Test current $\leq 200mA$
- Auto-ranging • Large dual display
- Test Hold function • Over Range indication • CAT III 1000V



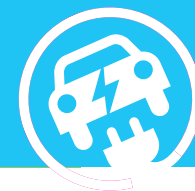
ESI-595

Automotive Meter with PC Interface

- Safe for use on hybrids and EV's
- CAT III 1,000 Volt
- Max/Min function
- DC Volts: 1000V • AC Volts: 750V
- AC/DC Amps: 20A
- Ohms: 40MΩ • Capacitance: 100uF
- RPM 4 : 0-4,000 RPM, 12,000 RPM x 10
- RPM2/DIS: 0-4,000 RPM, 6,000 RPM x 10
- Dwell: 1, 2, 3, 4, 5, 6, 8, 10, & 12 cylinder
- Frequency: 0-5Hz, 50Hz, 500Hz, 5kHz, 30kHz
- Duty cycle: 0.1% - 99.9%
- mS pulse width: 2.0mS - 10.0mS
- Temperature: -4°F to 1400°F, -20°C to 760°C
- Continuity • Diode test



ELECTRIC & HYBRID VEHICLE SAFETY SOLUTIONS



EV & HEV Service Tools & Equipment

EVDIAGKIT



AUTEL MAXISYS

AUL-EVDIAGKIT

EV Diagnostics Upgrade Kit

- Includes EVDiag Box, software, and adapters for specific vehicles to achieve battery packs diagnostics for electric vehicles
- Compatible with the MaxiSYS Ultra, MaxiSYS Ultra ADAS, MaxiSYS MS919, and MaxiSYS MS909

BATTERY PACK DIAGNOSTICS

- In-depth battery pack diagnostics for the most popular EV vehicles on the market including BMW, Tesla, and VW/Audi
- State of Charge and State of Health analysis for true battery condition

MSULTRAEV



MS909EV



MS909EV & MSULTRAEV INTELLIGENT EV DIAGNOSTICS



Intelligent EV Diagnostics Tablets

- Secure high-voltage system testing and analysis
- Advanced diagnostics for U.S., European and Asian electric, gas & diesel, and hybrid vehicles

| | AUL-MS909EV | AUL-MSULTRAEV |
|---------------------------------|---|--|
| HARDWARE | | |
| Wireless Vehicle Connection | Bluetooth MaxiFash VCI | Bluetooth MaxiFash VCMI |
| Colour Touchscreen | 10" LCD | 13" LCD |
| Processor | 2.2 GHz + 1.8 GHz Octa-Core | 2.2 GHz + 1.8 GHz Octa-Core |
| Memory / RAM | 128GB SSD / 4GB RAM | 256GB SSD / 4GB RAM |
| Docking Station | | Included |
| EVDiag Box | Included | Included |
| SOFTWARE | | |
| Operating System | ANDROID 10.0 | ANDROID 7.0 |
| Split Screen Display | | View Multiple Functions At Once |
| High-Voltage System Diagnostics | Diagrams of High-Voltage System Block | Diagrams of High-Voltage System Block |
| Battery Pack Diagnostics | SOC and SOH Analysis | SOC and SOH Analysis |
| Advanced VCMI 5-in-1 Device | | VCI, Oscilloscope, Multimeter, Waveform Generator, CAN Bus Check |
| Secure Gateway Access | Authorized FCA Access with AutoAuth Account | Authorized FCA Access with AutoAuth Account |
| FEATURES | | |
| Service Resets | 36 Service Features | 36 Service Features |
| Diesel (Light & Medium Duty) | Reset Diesel Emissions | Reset Diesel Emissions |



ELECTRIC & HYBRID VEHICLE SAFETY SOLUTIONS



EV & HEV Service Tools & Equipment

COMMANDER4100



| ARCTIC COMMANDER | MTC-COMMANDER4100 |
|--|----------------------------|
| FEATURES | Automatic R1234YF & Hybrid |
| Colour Touch Screen | 10" |
| Automatic and Manual Procedures | ■ |
| Automatic Vacuum Leak Test: Programmable | ■ |
| Printer | E-Printing Capable |
| Vehicle A/C System Flushing | Optional |
| Vacuum Pump | 6 CFM |
| Refrigerant Identifier | ■ |
| Wi-Fi Capable | ■ |

MSX3030/
MSX1234

MXHD



| MAXX AIR | CPS-MSX3030 | CPS-MSX1234 | CPS-MXHD |
|------------------------|--|--|--|
| FEATURES | R134A & R1234YF Hybrid/EV Compatible | R1234YF Hybrid/EV Compatible | R134A Commercial Vehicles/Hybrid/EV Compatible |
| Colour Touch Screen | 7" | 7" | 7" |
| Printing | Wi-Fi printer capable. Thermal printer (optional). | Wi-Fi printer capable. Thermal printer (optional). | Wi-Fi printer capable. Thermal printer (optional). |
| Recovery Tanks | Includes 2 x 30lb. Compatible with 50lb. | Includes 1 x 30lb. Compatible with 50lb. | Includes 1 x 50lb. Compatible with 90lb. |
| Vacuum Pump | 2 CFM | 2 CFM | 6 CFM |
| Refrigerant Identifier | ■ | ■ | |
| Wi-Fi Enabled | ■ | ■ | ■ |
| Bluetooth® Enabled | ■ | ■ | ■ |

AC1234-4

34788NI-H

AC1234-9



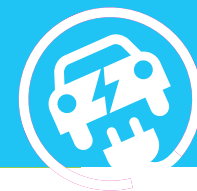
| | ROB-AC1234-9 | ROB-AC1234-4 | ROB-34788NI-H |
|---------------------------|--|---|------------------------------|
| FEATURES | R1234YF & Hybrid Compatible | R1234YF & Hybrid Compatible | R134A Hybrid Compatible |
| Colour Display | 10" | 4.3" Diag. | 5" x 9" |
| Fully Automatic Operation | ■ | ■ | ■ |
| Printer | Google Cloud Printing | Optional | Optional |
| A/C System Flushing | ■ | ■ | ■ |
| Refrigerant Identifier | ■ | ■ | |
| Vacuum Pump | 1.5 CFM | 1.5 CFM | 1.5 CFM |
| Connectivity | Incorporated Wi-Fi & Bluetooth® Technology | Wi-Fi & Bluetooth® Capable (optional kit) | Wi-Fi Capable (optional kit) |

FREE!

Buy #ROB-AC1234-4 and obtain #ROB-30038 for free: Printer.



ELECTRIC & HYBRID VEHICLE SAFETY SOLUTIONS



EV & HEV Service Tools & Equipment

TRACERLINE®



HBF-TPOUV20EV

POE-Based EV A/C Dye UV Leak Detection Kit

- Compatible with R-1234yf & R-134a
- **TP9815EV-P3:** (3) 0.25 oz (7 ml) cartridges of Electric Vehicle POE-based A/C Dye Mini-EZ™ cartridges
- **TP9845:** EZ-Ject™ dye injector
- **TP-9813:** R-134a coupler and purge fitting
- **TP19:** fluorescent dye cleaner
- **TP9831:** R-1234yf adapter



TRACERLINE®



HBF-TP9812-BX

Hybrid Vehicle/ESTER MINI-EZ™ Universal A/C Dye Injection Kit

- Uniquely blended with special additives for hybrid A/C systems
- Compatible with R-1234yf & R-134a
- **TP9811-P3:** (3) 0.25 oz (7 ml) single-dose Hybrid Vehicle/Ester A/C dye cartridges
- **TP9845:** EZ-Ject™ dye injector
- **TP-9813:** R-134a coupler and purge fitting
- **TP9831:** R-1234yf adapter
- Services up to 3 vehicles



TRACERLINE®



HBF-TP9814EV-BX

POE-Based EV A/C Dye MINI-EZ™ Injection Kit

- Compatible with R-1234yf & R-134a
- **TP9815EV-P3:** (3) 0.25 oz (7 ml) cartridges of Electric Vehicle POE-based A/C Dye Mini-EZ™ cartridges
- **TP9845:** EZ-Ject™ dye injector
- **TP-9813:** R-134a coupler and purge fitting
- **TP9831:** R-1234yf adapter
- Services up to 3 vehicles



TRACERLINE®



HBF-TP9811-P3

Hybrid Vehicle/ESTER MINI-EZ™ Universal A/C Dye

- Uniquely blended with special additives for hybrid A/C systems
- Compatible with R-1234yf & R-134a
- (3) 0.25 oz (7 ml) single-dose Hybrid Vehicle/Ester A/C dye cartridges
- Services up to 3 vehicles



TRACERLINE®



HBF-TP9815EV-P3

POE-Based EV A/C Dye MINI-EZ™ Cartridges

- Compatible with R-1234yf & R-134a
- (3) 0.25 oz (7 ml) single-dose Electric Vehicle A/C dye cartridges
- Services up to 3 vehicles



TRACERLINE®



Hybrid Vehicle /ESTER A/C Oil & A/C Oil + UV Dye

- Compatible with R-1234yf & R-134a
- Services 1 vehicle
- Viscosity: 32 cSt/Ester

| Item # | Description |
|---------------|--|
| HBF-TP32EH-5 | 5 oz (148 ml) Foil Pouch with A/C Oil |
| HBF-TP32EHD-5 | 5 oz (148 ml) Foil Pouch with A/C Oil + UV Dye |

TP32EH-5



TP32EHD-5

TRACERLINE®



Electric Vehicle A/C Oil & A/C Oil + UV Dye

- Compatible with R-1234yf & R-134a
- Services 1 vehicle

| Item # | Description |
|----------------|--|
| HBF-TP100EV-5 | 5 oz (148 ml) Foil Pouch with POE-Based A/C Oil |
| HBF-TP100EVD-5 | 5 oz (148 ml) Foil Pouch with POE-Based A/C Oil + UV Fluorescent Dye |

TP100EV-5



TP100EVD-5



g2stobeq.ca

Please contact your local Distributor
for pricing and availability.

